

## CHIMNEYVILLE WEAVERS

DECEMBER, 1990, NEWSLETTER

### Calendar

December 8, 1990 -- Loom Crawl, 10am at Barbara Mitchells for appetizers, then on to Melanie Hays' for lunch. Details and maps below.  
January 19, 1991 -- January Guild Meeting, knitting workshop, tentatively  
Danuary 24-28, 1991 -- HGA Board of Directors Meeting in Jackson  
February 16, 1991 -- February Guild Meeting  
March, 1991 -- Mississippi Weaves, III  
December, 1991 -- Weaving exhibit, DGNB Gallery Downtown

### November Meeting Minutes

The November meeting was held at the weaving studio at the Craftsmen's Guild office and shop. Hazel reported that our treasury has \$743.33.

Gerry Reiff re-opened discussion regarding the DGNB exhibit in December, 1991. This was done in light of a visit paid to the gallery by Gerry, Margaret Williard and me. The gallery is incorporated in with a snack shop on the Amite/Lamar corner of the building. It is a very attractive setting. A major concern with the contract regards the lack of liability by DGNB for items displayed there. Exhibition of pieces is at the owners risk, although it is advisable to check with your insurance carrier about coverage with your homeowners policy. In light of the above, we took another vote and decided to sign the contract (which can be cancelled in writing up to 2-weeks prior to opening if needed). Gerry will coordinate this event--anyone wishing to co-chair with Gerry contact Gerry or Margaret W.

We made final plans for the Chimneyville Crafts Festival events, including sign-up for tree set-up and take-down and team leaders for booth sitting. Hazel has secured a tree compliments of the Jolly Elf Christmas Tree Farm in Canton, who will receive a written mention in the Festival directory. All decorations will be available for pick-up at the December Loom Crawl.

The Loom Crawl, Cecember 8, will begin at 10am at Barbara Mitchell's home at 1012 Parkwood Place and will travel to Melanie Hays' home at 2739 Old Country Club in Pearl. As done in previous years, handmade gifts will be exchanged. Anyone wishing to participate in the gift exchange need only bring a handmade gift. Additionally, Melanie promises to have furry mitten instructions for all.

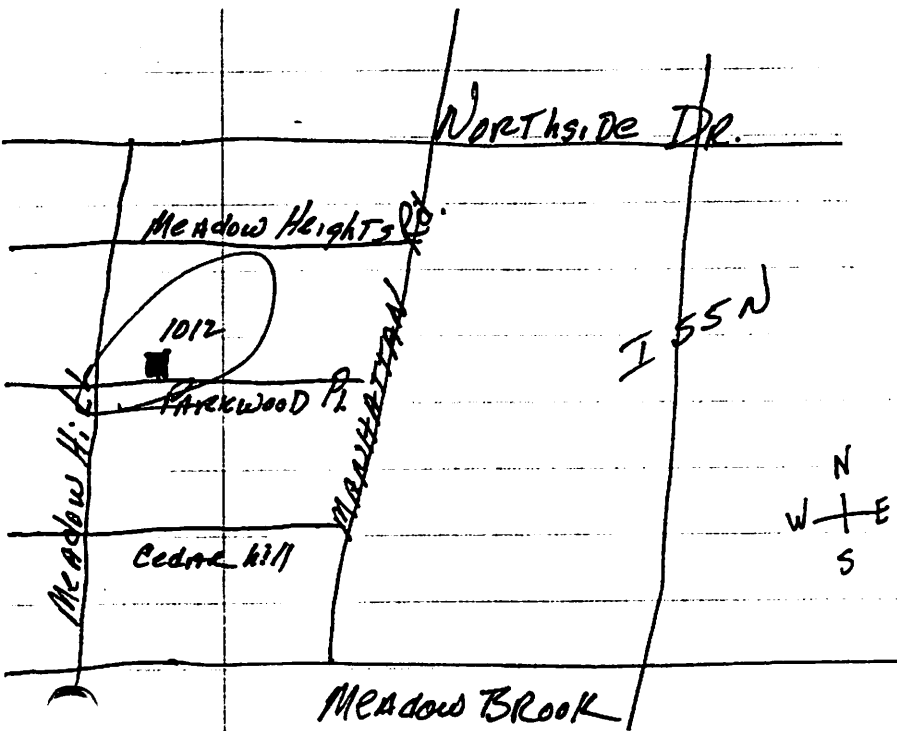
Barbara Mitchell has agreed to help Amy Evans administer the Mississippi Weaves III show this March. Her first act will be to secure awards; Amy is working to secure a juror; I will revise and print the call-for -entries for mailing ASAP; Margaret Williard will receive entries. Amy noted that 121 Millsaps, our show location, is a great gallery with lots of wass space, but we will need display props. If you have ideas or props that can be used, contact Amy or Barbara.

We passed around sign-up sheets for meals for the HGA Board of Directors Meeting in January. There are still some open spaces on that list. If you can fill a space, call me at 856-3142. Will publish the sign-up list again prior to the January meeting. Margaret W. read a nice letter from HGA President Norma Smayda accepting our invitation.

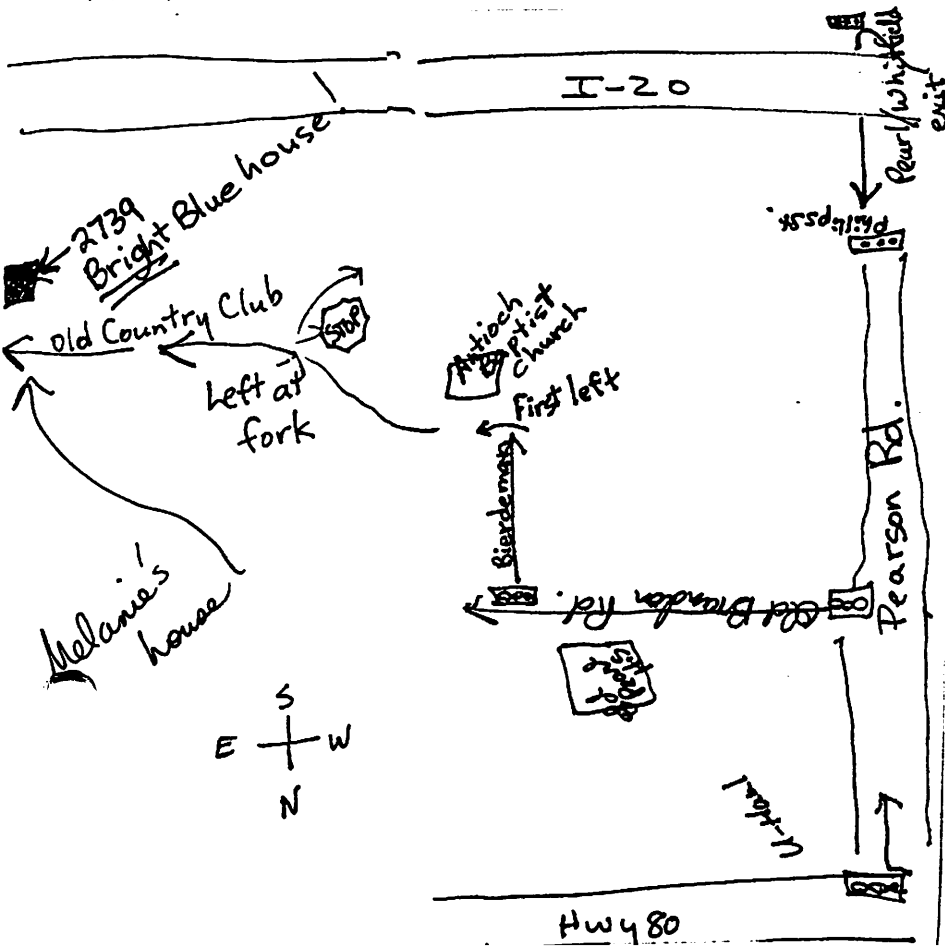
Tina announced that she is accepting things for both the library and for the scrapbook.

Respectfully submitted, Virginia Rogers.

Directions to Barbara's ...



Directions to Melanie's ...



From the Directors Couch...

Thanks a million, all you volunteers! The Christmas Tree looks great. Keep up the good work, and I hope to see everyone at the Loom Crawl.

--Margaret

Notes/Announcements

Loom Crawl -- Here are maps and a list of who signed up for what: appetizers--Gerry Reiff, Jane Dollar, Margaret Pittman; soup/main course--Ginny Trainor, Marva Goodman, Hazel Howell; salad/side--Marcy Petrini, Carol Parks, Sandi Tucker; bread--Norma Cox, Marcy Petrini; dessert--Margaret Williard, Janu Burrows II, Sharon Williams.

Add this name to your directory of members: Linda Chapman, 1209-B N. Montgomery, Starkville, MS 39759.

Standing committees -- We signed up for committees in November. Will assign places for those not in attendance and will publish in the January newsletter.